



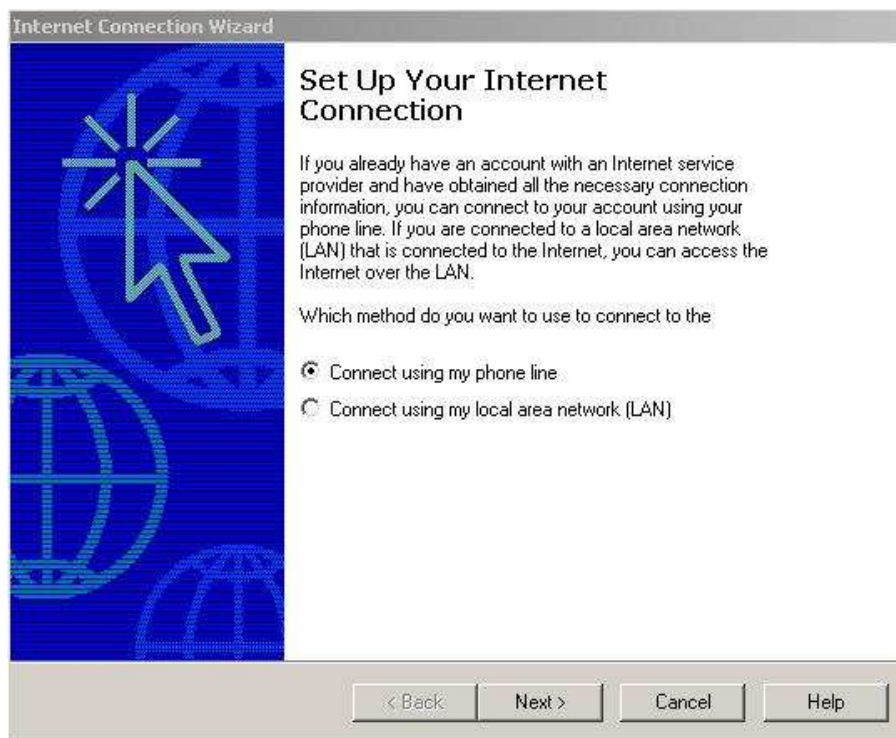
Open your Start menu and click on Run.



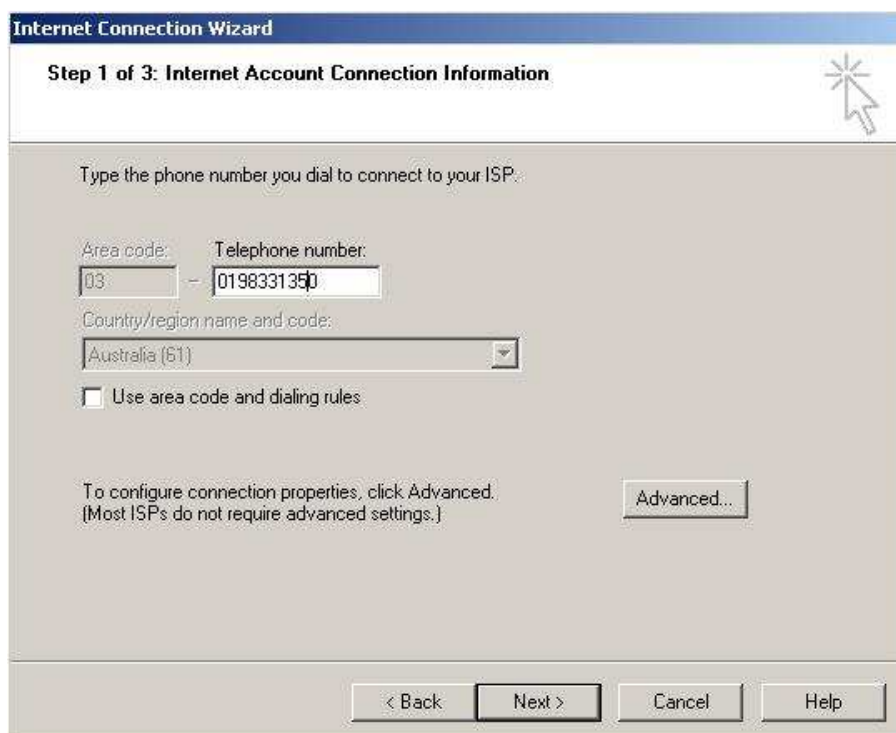
Enter "inetwiz" and click "OK." to continue.



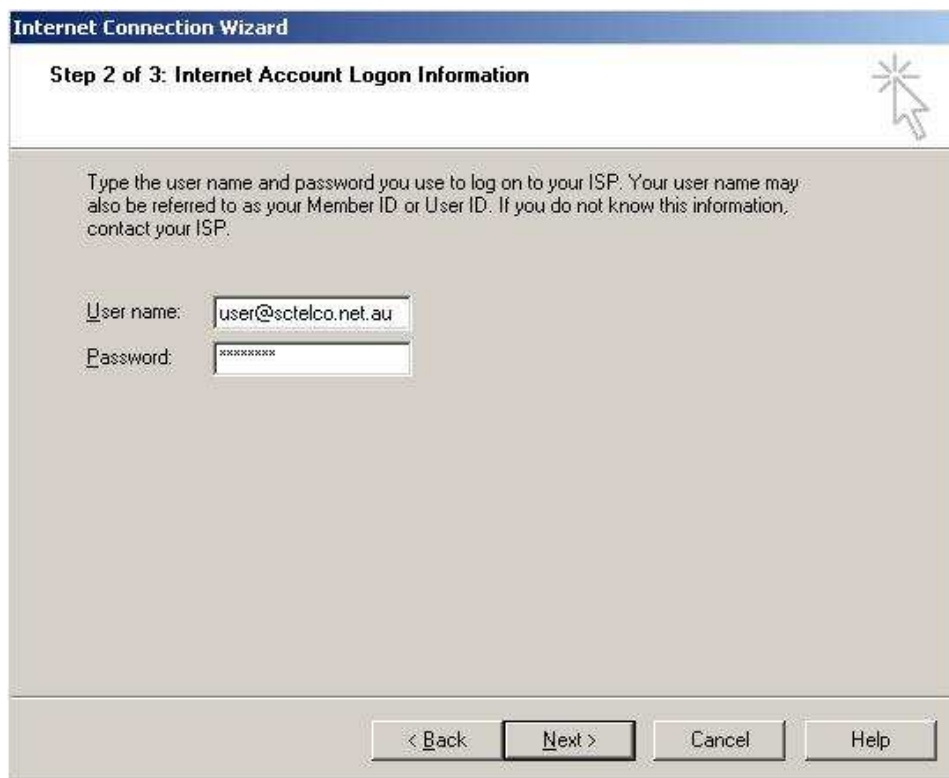
This will start the Internet Connection Wizard. You will be asked a series of questions, which your computer will use to configure itself to dial sctelco.net.au. Select "Connect using my phone line" and click "Next."



Enter your local access number in the field labeled "Telephone Number." This is 0198331350. Remember to untick the "Use area code and dialing rules". Click "Next" to continue.



For your "User name" enter your sctelco.net.au account name in lowercase with no spaces, followed by "@sctelco.net.au". Enter your password as well. sctelco.net.au passwords are case-sensitive. Click "Next" to continue.



The screenshot shows the 'Internet Connection Wizard' window at 'Step 2 of 3: Internet Account Logon Information'. The window has a blue title bar and a white header area with a mouse cursor icon. The main area is light gray and contains the following text: 'Type the user name and password you use to log on to your ISP. Your user name may also be referred to as your Member ID or User ID. If you do not know this information, contact your ISP.' Below this text are two input fields: 'User name:' with the value 'user@sctelco.net.au' and 'Password:' with a masked password '*****'. At the bottom of the window are four buttons: '< Back', 'Next >', 'Cancel', and 'Help'.

Name your connection "sctelco.net.au" Click "Next" to continue.



The screenshot shows the 'Internet Connection Wizard' window at 'Step 3 of 3: Configuring Your Computer'. The window has a blue title bar and a white header area with a mouse cursor icon. The main area is light gray and contains the following text: 'Type the name you want to use for this connection. This can be the name of your ISP or any name you want to use.' Below this text is a single input field labeled 'Name:' with the value 'Connection to 0198331350'. At the bottom of the window are four buttons: '< Back', 'Next >', 'Cancel', and 'Help'.

You will be prompted to start configuring an email account. Select "No" and click "Next" to continue.



You have now completed the Windows XP Dialup configuration, simply click "Finish" to complete.

