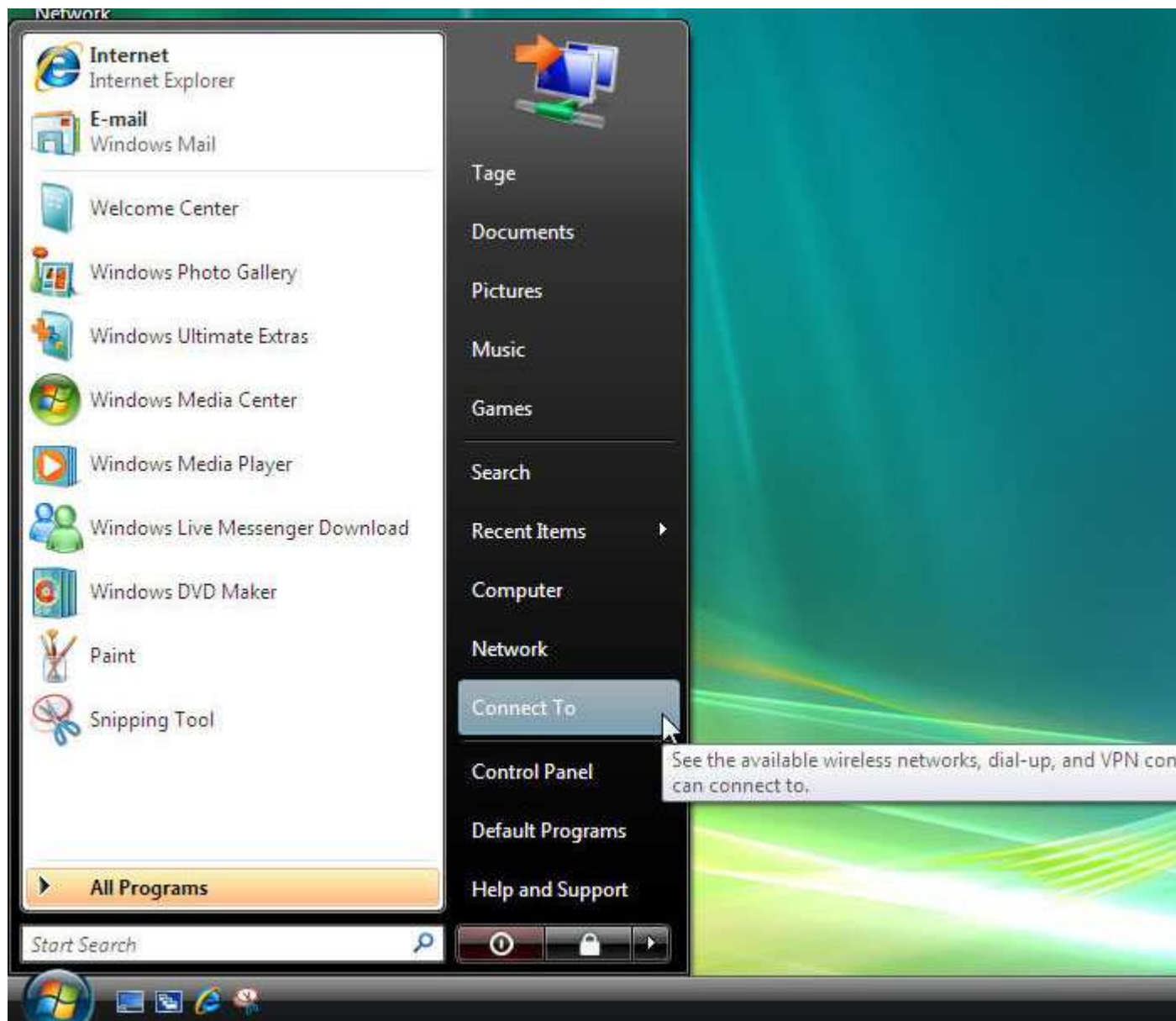
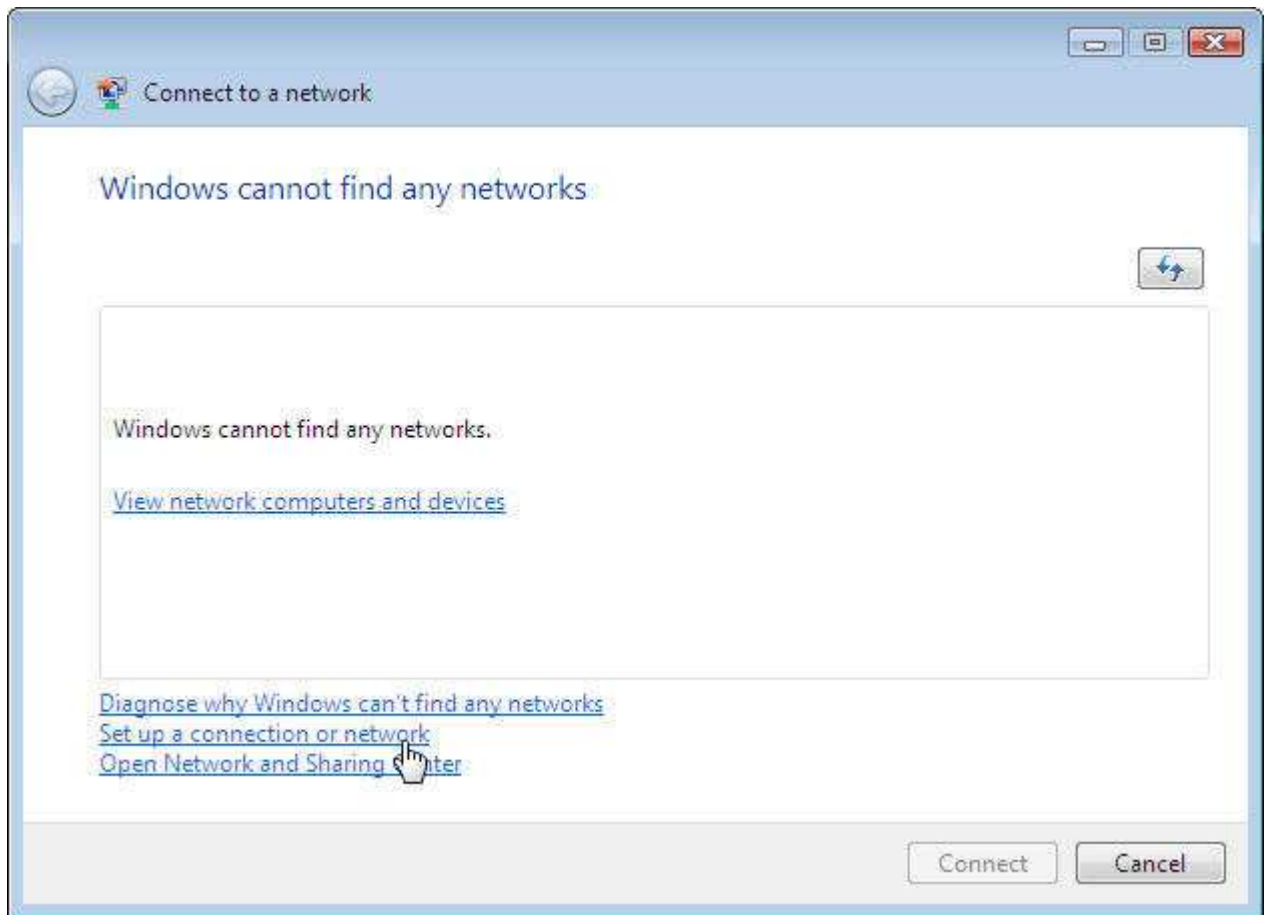




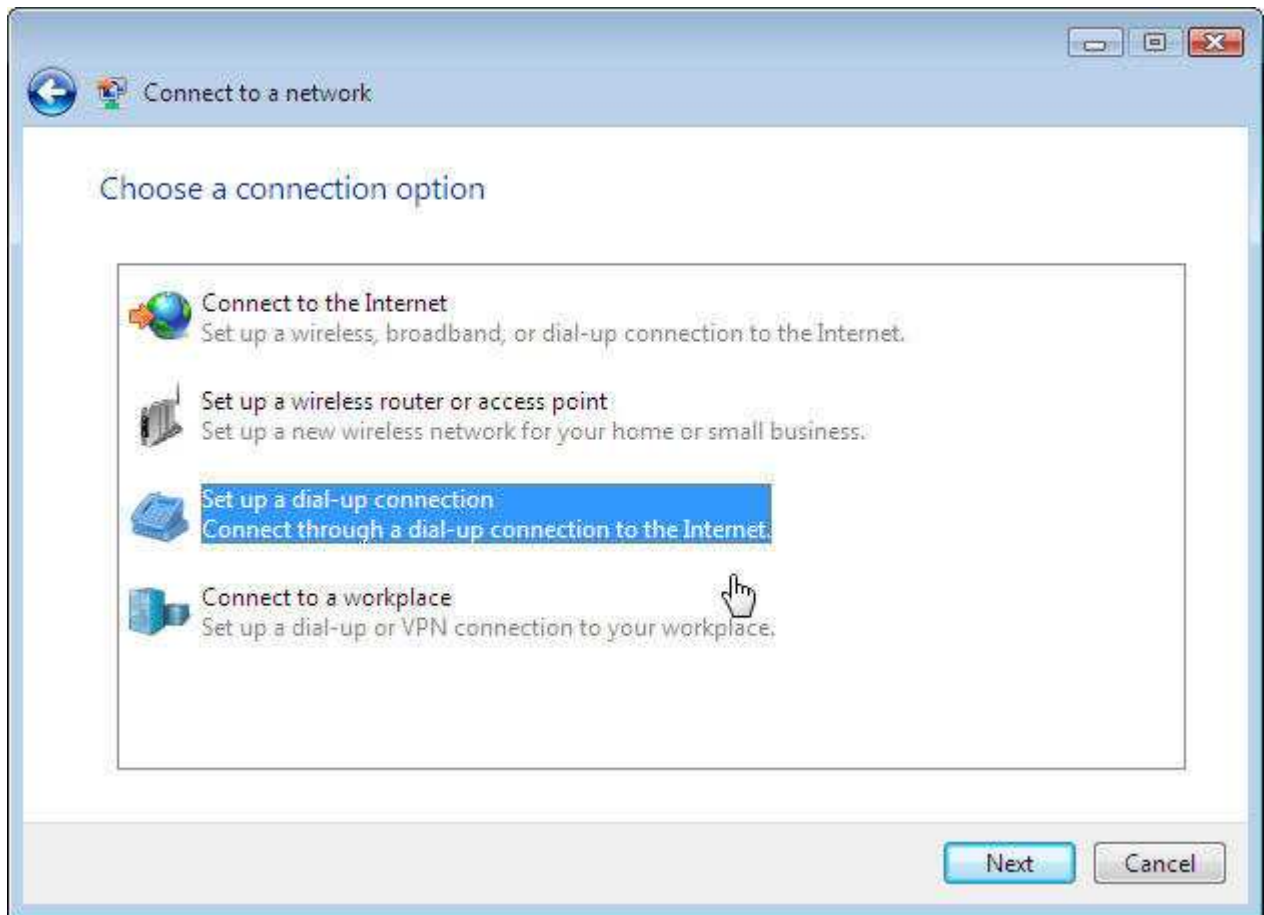
Open the Start Menu and select "Connect to."



Select the option to "Set up a connection or network."



Select "Set up a dial-up connection" and click "next."



Enter your Dial Up number (0198 331 350) in the field labeled "Dial-up phone number."  
Enter your SCTelco.net.au user name in the box labeled "User name" and your  
SCTelco.net.au password in the box labeled "Password." Once you have entered all that  
information, select the "Connect" button.

Set up a dial-up connection

Type the information from your Internet service provider (ISP)

Dial-up phone number:  [Dialing Rules](#)

User name:

Password:

Show characters

Remember this password

Connection name:

Allow other people to use this connection  
This option allows anyone with access to this computer to use this connection.

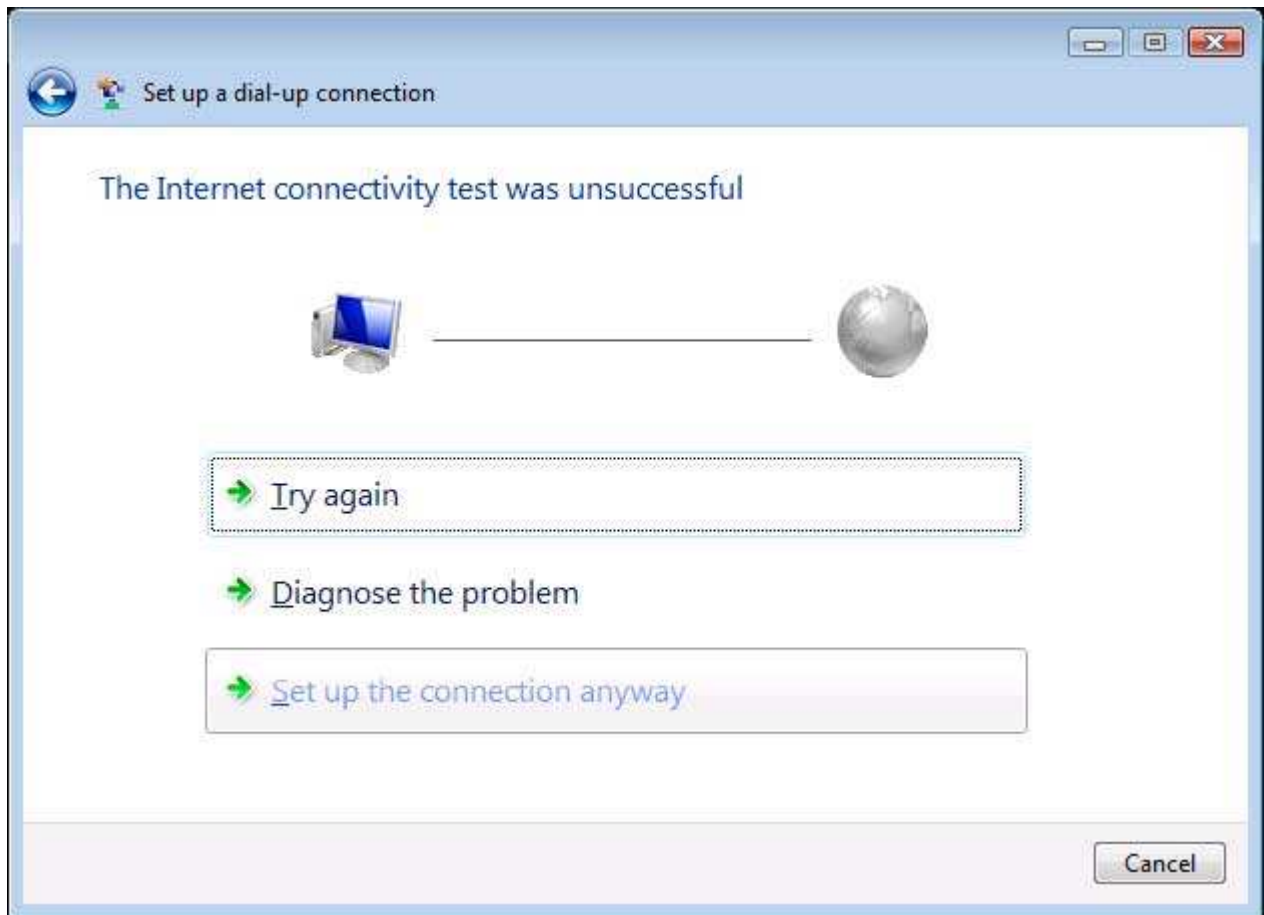
[I don't have an ISP](#)

Windows will now attempt to use your new dialup connection before saving your work. If you would like to interrupt this process and save, click the button labeled "Skip" below.

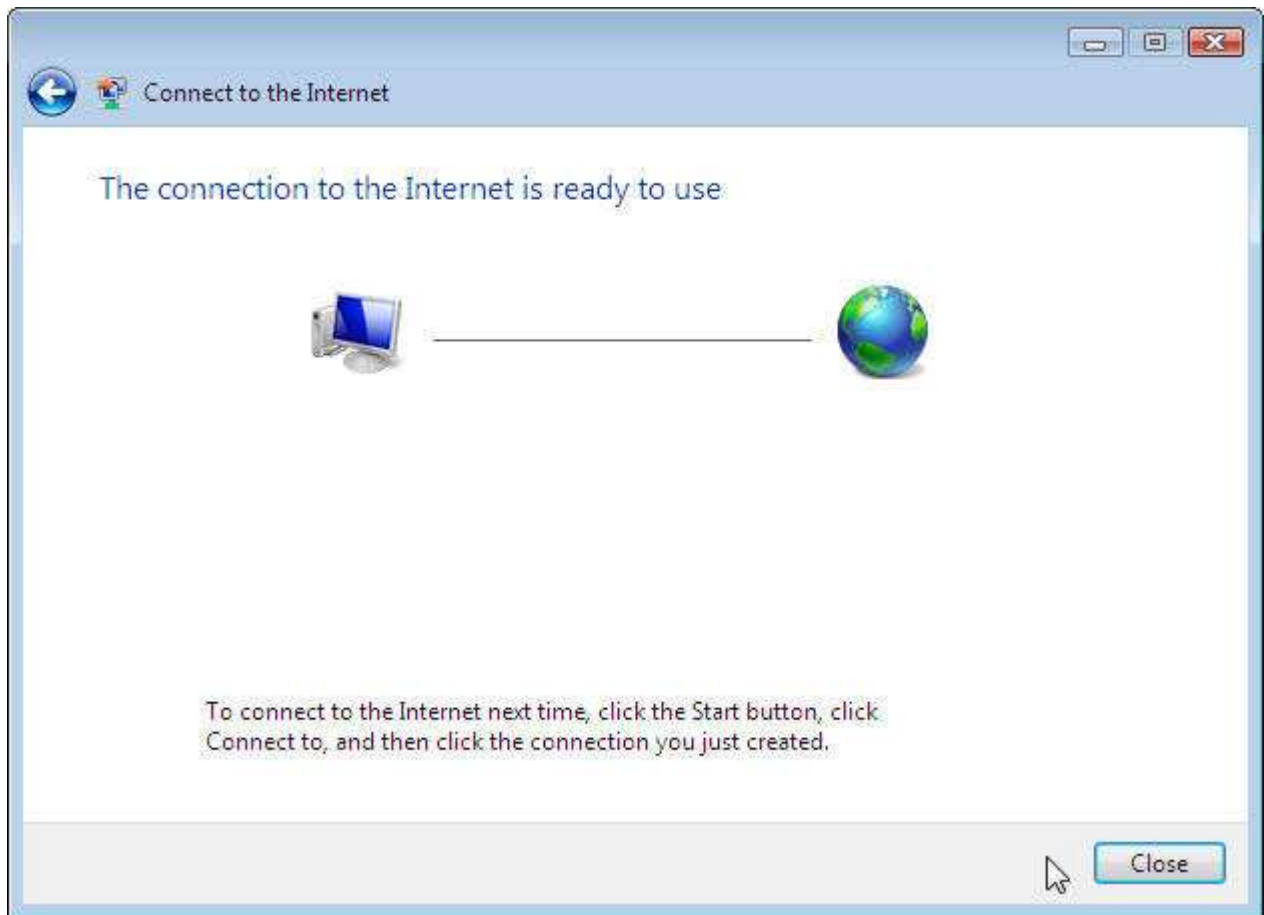


If you skipped the initial connection attempt, or your attempt to connect otherwise failed, you will be presented with three options:

- Try Again. This will simply instruct your computer to re-try the connection.
- Diagnose the problem. If you did not intentionally interrupt the connection attempt, this may be a good option. Dialup diagnostics are beyond the scope of this document.
- Set up the connection anyway. If you intentionally skipped the test connection, this is probably the option you were intending to use.



Once your connection has been successfully created, you will get the following screen. Select the "close" button.



To connect to the internet, click the Start Button, select "Connect to," and then select the connection that you just created.