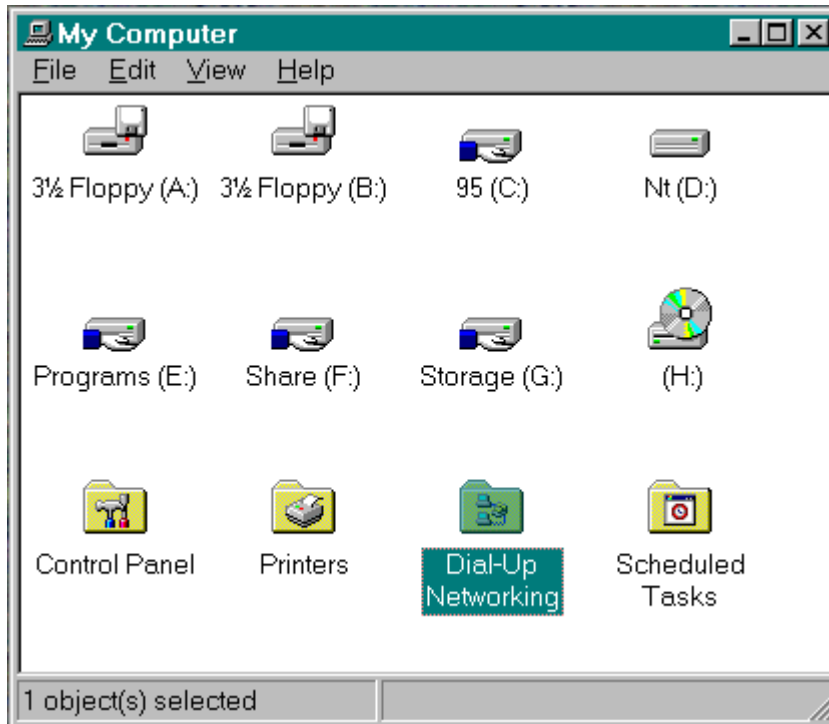
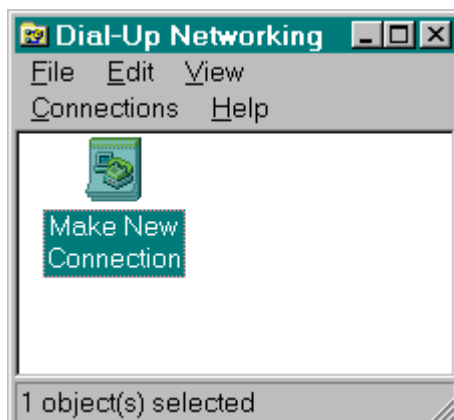


DIAL UP CONFIGURATION

To make a new Dial-Up Networking connection in Windows95, Windows98, or Windows ME, double click on the *My Computer* icon (it is usually in the top, right hand corner of your screen) and open the *Dial-Up Networking* folder.

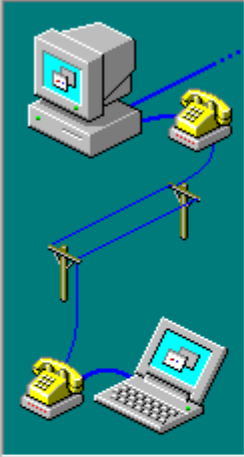


Double-click on the *Make New Connection* icon.




Change the name from "My Connection" to *SCTelco*, and click on *Next*. At this point, you may have to set up and configure your modem, if that hasn't been done yet. Refer to your computer owner's manual or to your computer manufacturer's technical support line for this or any other hardware-related issue.

Make New Connection



Type a name for the computer you are dialing:

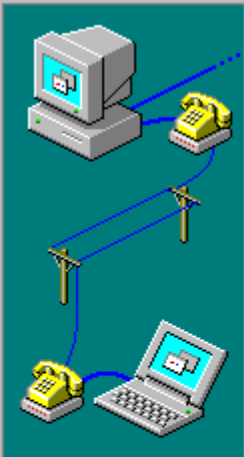
Select a modem:



< Back Next > Cancel

You do not need to specify an area code, because you are not making a long distance call, so leave the *Area Code* field blank (or erase anything that is there). Enter the telephone number appropriate for your area, and click on *Next*.

Make New Connection



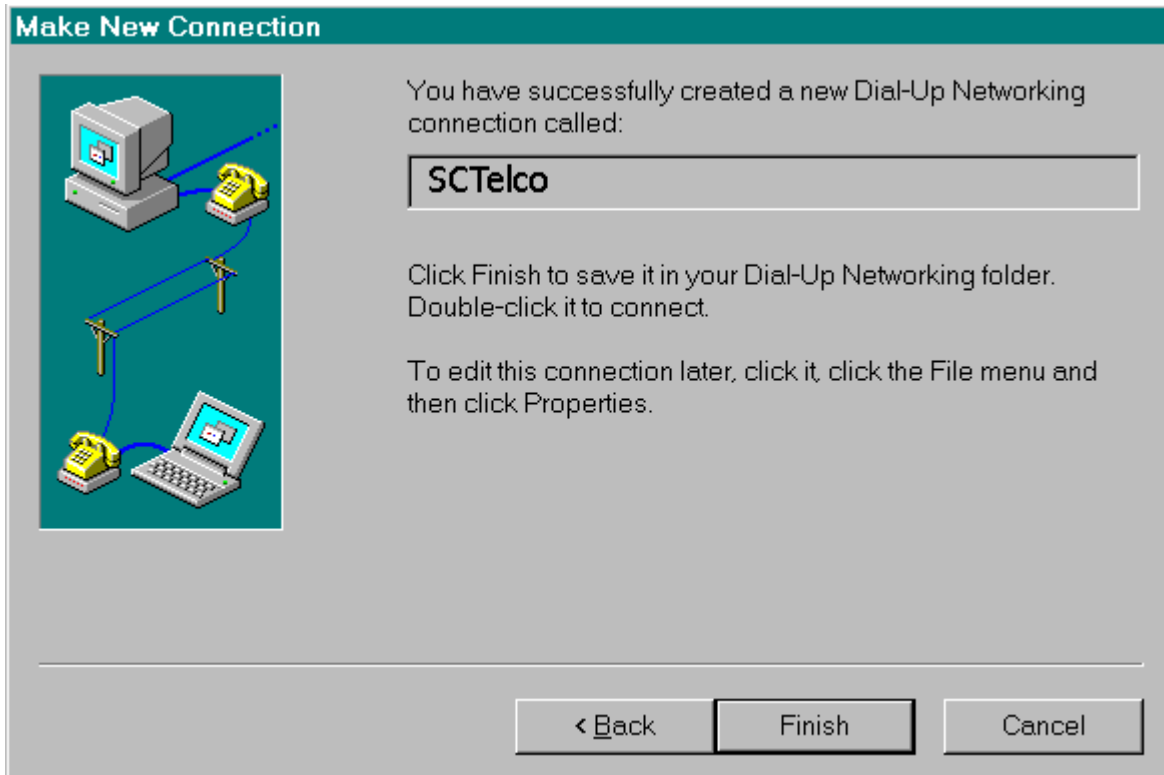
Type the phone number for the computer you want to call:

Area code: - Telephone number:

Country code:

< Back Next > Cancel

Click on *Finish*



In the *Dial-Up Networking* window, double click on the Sonic icon. Make sure that the username in the *Connect To* window is *user@sctelco.net.au* where *user* is your username) and enter your password. Verify that the phone number is correct, and click on *Connect* to get connected!

(If security isn't an issue, you may want to check the Save password button. It will remember your password for you, but anybody who turns on your computer will also be able to dial into your account.)

