

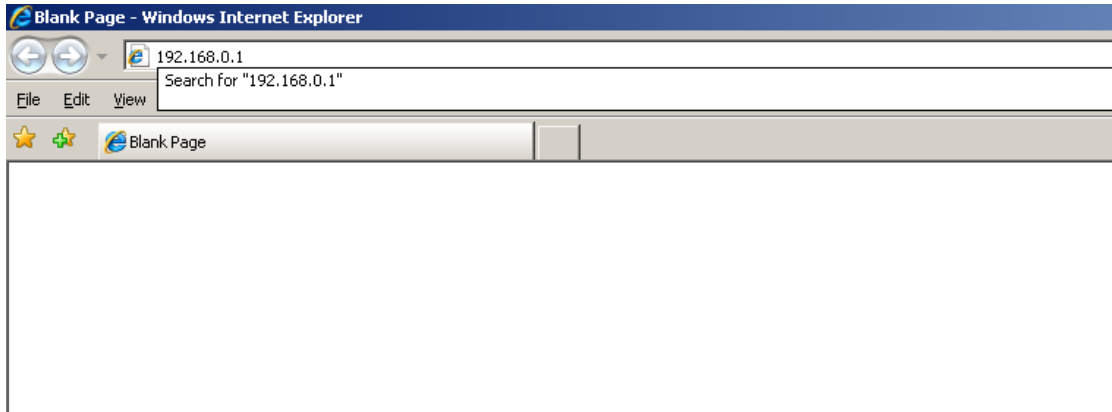


Netgear DG834G

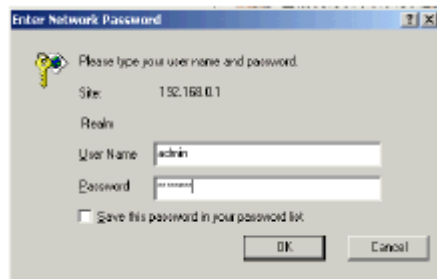
Page 2-4 – New Setup Guide

Setup Guide

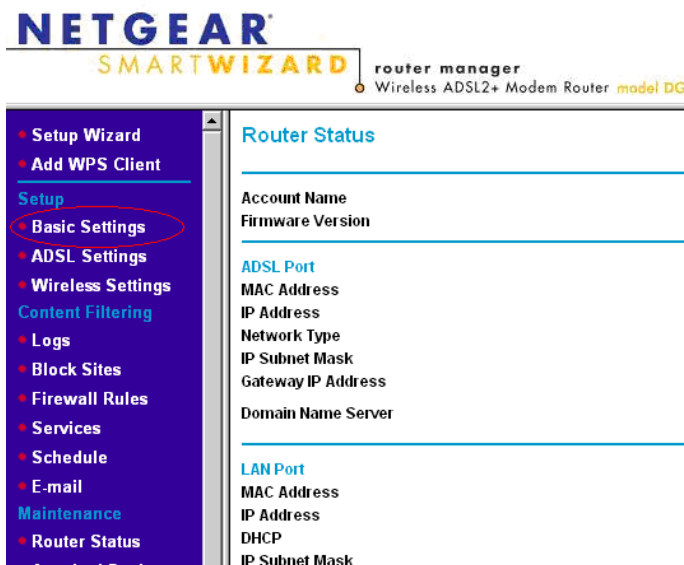
1. Open up internet explorer. In the address bar at the top of the page type <http://192.168.0.1> then press the **Enter** key.
If your modem was supplied by Optus, enter <http://10.1.1.1> instead.



2. You will be prompted to enter a username & password.
Username: admin
Password: password



3. On the left hand side click select **Basic Settings**





- You will be prompted with the below page, enter the settings listed below & click the **Apply** Button

Does Your Internet Connection Require A Login: Yes

Encapsulation: PPPoE (PPP over Ethernet)

Login : user@sctelco.net.au

Password: (your SCTelco password)

Basic Settings

Does Your Internet Connection Require A Login?

- Yes
 No

Encapsulation

PPPoE (PPP over Ethernet)

Login

user@sctelco.net.au

Password

••••••••

Service Name (If Required)

Idle Timeout (In Minutes)

0

Internet IP Address

- Get Dynamically From ISP
 Use Static IP Address

0 . 0 . 0 . 0

Domain Name Server (DNS) Address

- Get Automatically From ISP
 Use These DNS Servers

Primary DNS

. . . .

Secondary DNS

. . . .

NAT (Network Address Translation)

- Enable Disable Disable firewall

Apply

Cancel

Test

5. The same page will load up, on the left hand side click **ADSL Settings**.



6. Update the settings as below & click the **Apply**
Multiplexing Method: LLC-BASED
VPI: 8
VCI: 35
DSL Mode: Auth (Multi-mode)

ADSL Settings

Multiplexing Method	LLC-BASED ▾
VPI	8
VCI	35
DSL Mode	Auto (Multi-mode) ▾